



NATO MOUNTAIN WARFARE CENTRE OF EXCELLENCE

Framework Nation: SVN

Sponsoring Nations: HRV, DEU, ITA

Partner Nation: AUT

Location: Poljče, Slovenia



NATO MOUNTAIN WARFARE CENTRE OF EXCELLENCE

The establishment of the NATO Mountain Warfare Centre of Excellence (NATO MW COE) contributes to the transformation and adaptation of the Alliance's capabilities which enable its forces to better operate in the mountain environment. The NATO MW COE incorporates a professional core that will ensure and develop the subject matter expertise to meet the requirements of MW challenges. This will enhance the ability of individuals and military units to engage in mountain warfare, as well as the Alliance's interoperability to operate in mountainous environment.

MISSION AND VISION

The mission of the NATO MW COE is to assist NATO member countries, partners, other countries and international organisations, in order to enhance MW capabilities through the following core areas:

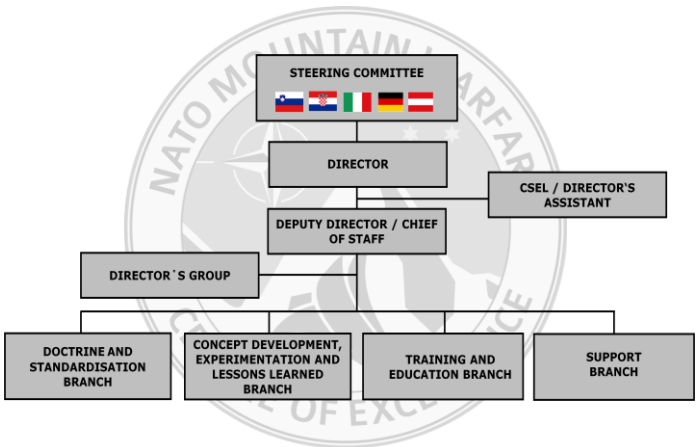
- Development of mountain warfare-specific doctrine and tactics.
- Concept development and experimentation.
- MW lessons learned process.
- Education and training.
- Support to capability development.

The vision of the NATO MW COE is to be the hub for mountain warfare expertise in the NATO community.

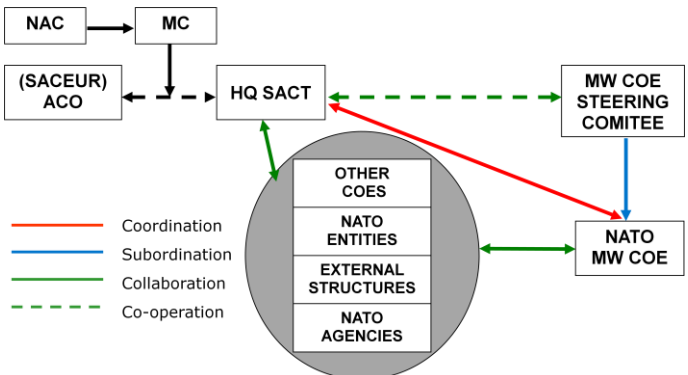
MILESTONES

- Established: 25 March 2015 (MOU signed).
- ACT Accreditation Visit: 26 - 27 May 2015.
- 1st Steering Committee Meeting: 28 - 29 May 2015.
- 2nd Steering Committee Meeting: 10 - 11 November 2015.
- Opening Ceremony: 10 November 2015.
- 22nd Activated NATO COE: 27 November 2015.

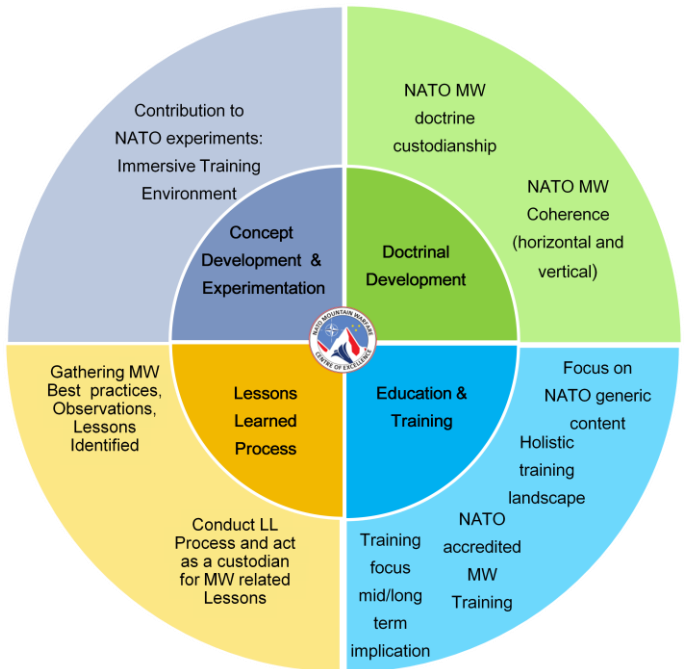
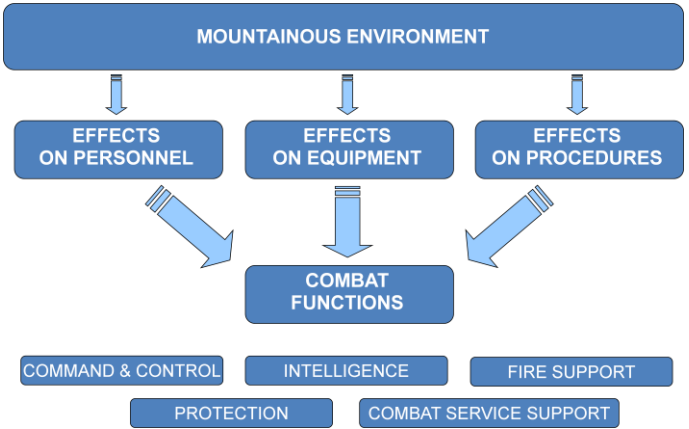
ORGANIZATION AND STRUCTURE



NETWORKING AND COOPERATION



SCOPE



All the NATO MW COE efforts are accomplished in close cooperation with the Sponsoring and Partner Nations. The Centre aims to become a reference in three main areas within the Mountain Warfare community of interest.

DOCTRINE AND STRANDARDIZATION BRANCH



VISION

- Provide coherence within the Alliance in the field of MW.

MISSION

- Explore existing doctrinal structures to identify incoherence and shortfalls in order to enhance MW-related topics.
- Develop submissions or stand-alone publications, according to the needs of interested parties.

CONCEPT DEVELOPMENT, EXPERIMENTATION AND LESSONS LEARNED BRANCH



VISION

- Become a custodian for MW Lessons.
- Effectively contribute to the developing of concepts.

MISSION

- Establish MW COE Lessons Learned Process and Lessons Learned Community of Interest.
- Ensure Concept Development and Experimentation activities in order to enhance MW capabilities.

TRAINING AND EDUCATION BRANCH



VISION

- Become a focal point for education and training in the field of MW.

MISSION

- Design, develop and conduct MW-related courses, as well as other forms of training and education.
- Accredite MW courses and training manuals.
- Provide complex MW training, exercises and events within the Alliance
- Ensure a uniform MW-related training and education.

LOCATION

The NATO MW COE is located in Poljče, a small village near the settlement of Begunje na Gorenjskem, Slovenia.



The facility provides all the conditions necessary for the effective operation of the NATO MW COE, namely lodging and accommodation, training areas in the surrounding area, good traffic connections, etc.



NATO MOUNTAIN WARFARE CENTRE OF EXCELLENCE

Poljče 27
SI-4275 BEGUNJE NA GORENJSKEM
SLOVENIA

Phone: + 386 4 532 3610
E-mail: info@mwcoe.org
www.mwcoe.org



NATO MOUNTAIN WARFARE CENTRE OF EXCELLENCE



www.mwcoe.org

